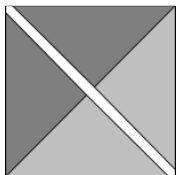
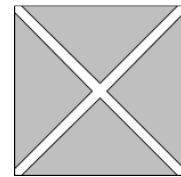




Mystery Quilt Part 5: Assembly - Cheryl Petreman

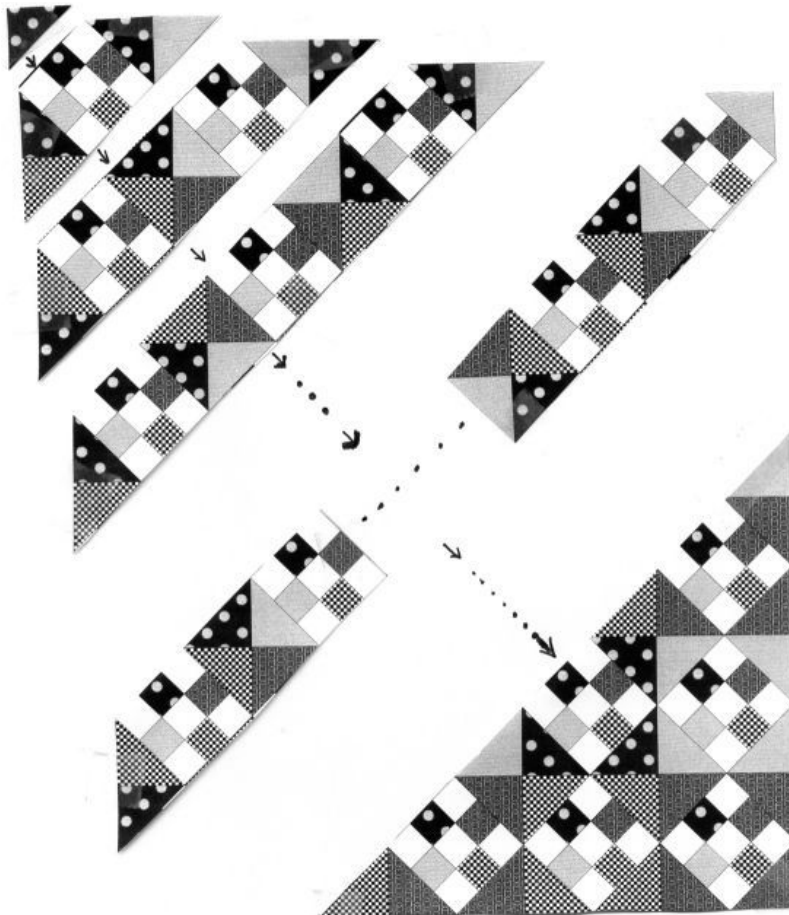
Take the 6" square(s) put aside in Part 3 and cut into 4 triangles by slicing along each diagonal. These will be the corner setting triangles of your quilt.



Take the HSTs put aside in Part 3 and square them up to 5.5" blocks. Cut them into 2 triangles each by slicing along the diagonal. These will be the side setting triangles of your quilt.

Referring to the diagram of the finished quilt, arrange the setting triangles, 9-Patch & Hourglass blocks on a flat surface. Sew each diagonal row and then sewing the rows together as shown.

Counting only the 9-Patch blocks, a crib quilt has 4 across by 6 down, a double has 8 by 12 and a queen has 12 by 15.



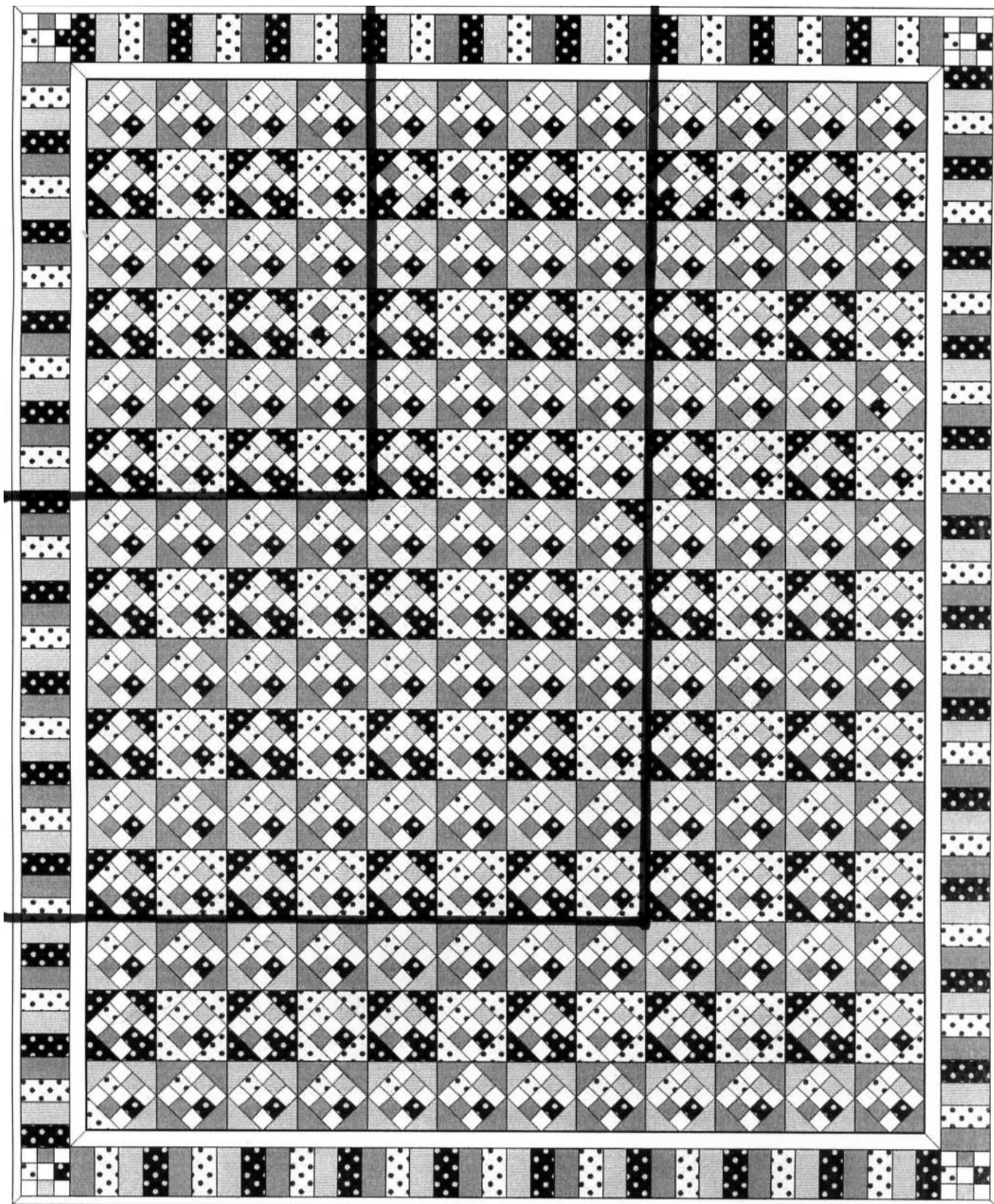
The remaining 2" strips of background fabric cut in Part 1, are used as the first border of the quilt. Be very CAREFUL not to stretch the sides – the side setting triangles have a bias (stretchy) edge. Lay the quilt out on a flat surface, right side up. Lay the border on top of the quilt, right side down. Use pins every 6 – 8 inches. Sew the border on with the quilt on the bottom (your feed dogs will help to gather in any fullness).

Sew the Rail Fence blocks together to form the 2nd border. If it ends up too long, re sew a few of the seams with a wider seam-allowance or cut off a bit of the first & last blocks – there are NO quilt police!!

The remaining 4 Nine-Patch blocks are used in the corners of the quilt.

Note: A few colour variations are displayed at <http://www.thisbe.org/gallery/v/cheryl/mystery>

Mystery Quilt Revealed!



If you are able, please send a JPEG picture of your completed quilt to cheryl@nb.sympatico.ca